

200 SERIES



The **DOEN 200 Series** range of models can be matched to engines from 400kW to 4000kW. These high performance units are specially designed and built for continuous commercial use and to meet the exacting standards of marine classification societies. They can be installed as single or as multiple jets in fiberglass, aluminium or steel hulls. They can also be supplied as booster jets.

The prefabricated duct is manufactured from Aluminium or Steel plate material resulting in an extremely strong and lightweight structure. The duct is supplied ready to weld or bolt in (vessels). Custom designs are possible to optimise vessel performance and to improve installation and machinery interfacing.

The **200 Series** waterjets is manufactured using only corrosion resistant materials. **The impeller, impeller casing and discharge nozzle are manufactured from stainless steel** to provide maximum service life in the most arduous operating environment with extreme resistance to erosion, corrosion and cavitation. The balance of the waterjet is manufactured from marine grade aluminium. This combination of materials provides a new and unique alternative to operators at a very competitive price.

A **CAN BUS** based electronic control system provides a fully integrated multi-station waterjet, engine and marine gear control. The system also provides alarm, monitoring, back up and emergency control function.

eDOCK multi function electronic joystick for single lever vector control and close quarter docking is available.



Distributor

DOEN WATERJETS PTY LTD

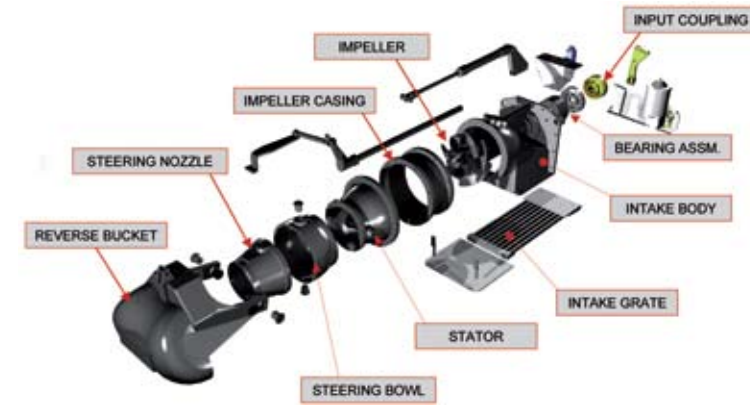
33 Venture Way, Braeside 3195
Victoria, Australia

Tel (+613) 9587 3944 Fax: (+613) 9587 3179
inquiries@doen.com

www.doen.com



100 SERIES



The **DOEN 100 Series** range of models can be matched to engines from 100kW to 900kW. These commercially rated units employ the latest in Waterjet Propulsion technology developed over 40years of in field experience, together with our ongoing Research and Development programs.

The **100 Series** waterjets are constructed from strong, corrosion resistant and corrosion compatible materials. The stainless steel impeller is a one-piece casting, housed in a stainless steel liner. The intake ducting, impeller casing, and discharge nozzle complete the pump housing and are all manufactured from cast aluminum. The steering and reverse ducting is also manufactured from cast aluminum. A modular construction is used for simplicity of assembly and ongoing maintenance. This minimises the need for special tools to remove these components.

The **100 Series** pump features a single stage axial flow impeller design, optimised to deliver high volume thrust. This provides superior cavitation resistance and enhanced load-carrying ability together with excellent top speed performance. Each model has a comprehensive range of efficient high thrust impellers which when coupled with DOEN's engineering expertise in waterjet propulsion application and installation, ensures correct selection and matching of waterjet, engine and gearbox combinations.

The **DOEN 100 Series** of waterjets can be installed as single, twin or triple jets in fiberglass, aluminium and steel hulls. They can also be supplied as booster jets.

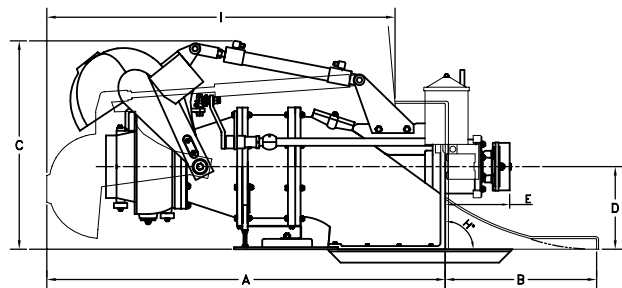
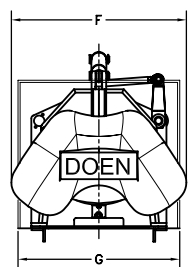
Performance
Reliability
Simplicity



MODEL RANGE

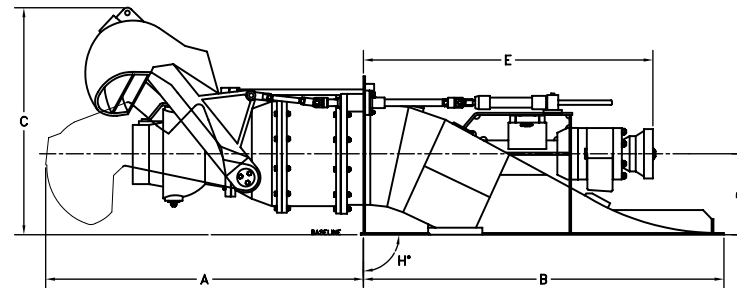
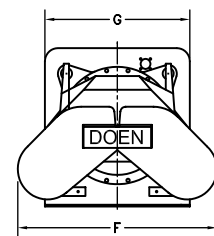


100 SERIES - SPECIFICATION TABLE								
		DJ100G	DJ105	DJ110	DJ120	DJ130	DJ140	DJ170HP
Power Range kW ⁽¹⁾ (hp)		225 (300)	260 (350)	335 (450)	380 (510)	410 (550)	520 (700)	855 (1150)
Max. Rpm		3600	3200	3055	2800	2600	2400	1975
Max. Displacement PLANING VESSEL	Single	3.5t	4t	4.5t	6t	7t	9t	12t
	Twin	8t	9t	10t	12t	17t	20t	26t
Max. Displacement DISPLACING VESSEL	Single	8t	9t	10t	15t	18t	20t	30t
	Twin	17t	20t	22t	30t	40t	45t	66t
Weight Kg (lbs)	Dry ⁽²⁾	125 (276)	170 (375)	180 (397)	225 (496)	295 (650)	307 (677)	550 (1213)
Dimensions ⁽³⁾ (mm)	A	1075	1150	1200	1200	1545	1545	1405
	B	290	455	455	520	630	630	1505
	C	560	630	630	620	880	880	835
	D	242	250	250	250	370	370	335
	E	170	195	195	265	220	220	1200
	F	540	540	540	700	775	775	900
	G	360	470	470	520	600	600	645
	H	95°	90° ⁽⁴⁾	90° ⁽⁴⁾	90°	90° ⁽⁴⁾	90° ⁽⁴⁾	90°
	I	920-965	1000-1075	1045-1120	1045-1120	1225-1495	1225-1495	N/A
Mounting Method		Transom	Transom	Transom	Transom	Transom	Transom	Pre-Fab.
Note	(1)	Maximum Rec. Continuous Power						
	(2)	Includes Std. Reverse Control System - Excludes Entrained Water						
	(3)	Typical only - not to be used for construction purposes						
	(4)	95° Transom mounted jet also available						



Data subject to change without notice

200 SERIES - SPECIFICATION TABLE							
		DJ200	DJ220	DJ260	DJ290	DJ330	DJ350
Power Range kW ⁽¹⁾ (hp)		1155 (1550)	1380 (1850)	1940 (2600)	2420 (3250)	3090 (4150)	4000 (5370)
Max. Rpm		1680	1525	1290	1160	1020	960
Weight Kg (lbs)	Dry ⁽²⁾	850 (1875)	1185 (2610)	1700 (3750)	2340 (5160)	3250 (7165)	3650 (8050)
Construction	Intake Duct	Aluminium Plate 5083#					
	Main Shaft	Stainless Steel SAF2205 S/S					
	Impeller	Stainless Steel casting CF8M S/S					
	Imp. Housing	Stainless Steel AISI 316 S/S					
	Stator	CF8M S/S + AISI 316 S/S					
	Steering Nozzle	Aluminium casting ASTM A356					
Reverse Duct	Aluminium casting ASTM A356 + Aluminium Plate 5083#						
Dimensions ⁽³⁾ (mm)	A	1675	1845	1985	2190	2490	2305
	B	1880	2090	2460	2745	3125	3630
	C	1150	1290	1365	1535	1750	1730
	D	395	460	540	605	690	685
	E	1520	1680	1940	2210	2515	2840
	F	1060	1200	1470	1650	1875	1990
	G	760	840	980	1110	1260	1250
	H	90° ⁽⁴⁾	90° ⁽⁴⁾	90° ⁽⁴⁾	90° ⁽⁴⁾	90° ⁽⁴⁾	90° ⁽⁴⁾
Mounting Method		Pre-Fab.					
Note	(1)	Maximum Rec. Continuous Power					
	(2)	Includes Std. Reverse Control System - Excludes Entrained Water					
	(3)	Typical only - not to be used for construction purposes					
	(4)	Standard Stated - Custom Shaft angles also available this model					



Data subject to change without notice



DOEN TRANSOM MOUNTING SYSTEM

DOEN PREFABRICATED INTAKE MOUNTING SYSTEM