

Heat Ignition Switch, GSS



GSS
w/o Dust Protection



GSS
w/ Dust Protection

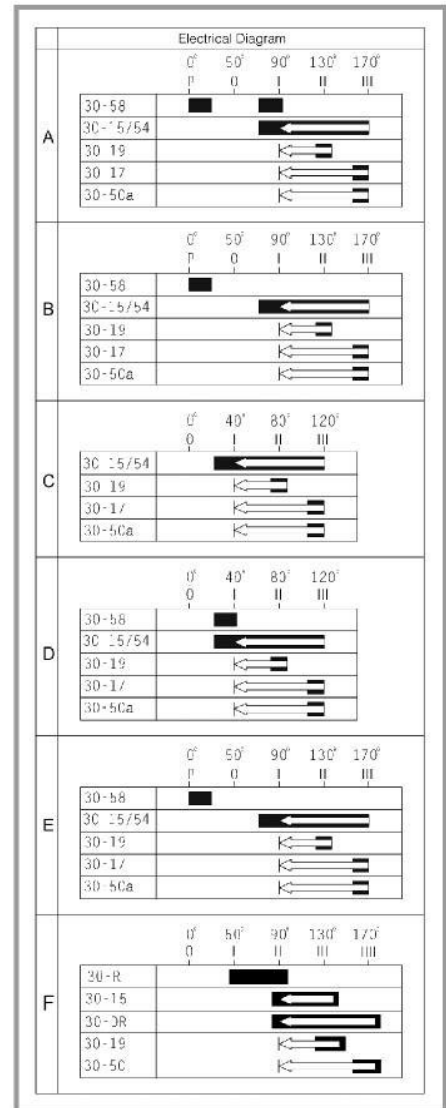
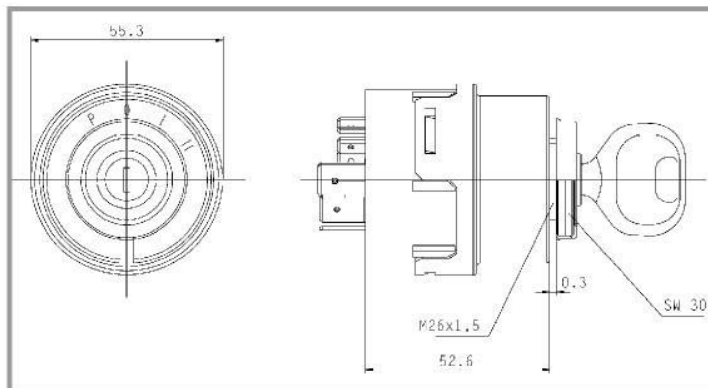


GSS
Keyless Switch



GSS
w/ Sealed Contacts (IP 66)

- Max. ambient temperature : -40°C bis +90 °C
- Lifetime; electrical : min. 25.000 operations
- mechanical : min. 100.000 operations
- Protection according to DIN 40050 : IP 63 (Standard)
- : IP 64 (Lock w dust protection)
- : IP 66 (Lock w dust protection & sealed contacts)
- Max. Voltage drop : 300 mV
- with or without restart inhibitor
- with or without water outlet
- Ignition key with customer logo upon request
- Customer article number on switch housing via ink jet





Heat Ignition Switch, GSS

Article Numbers for Heat Ignition Switches GSS

No	KAT Nr.	KAT-Nr. Sealed	Lock	Key	Dust Protection	Repeat Prevention	Water Outlet	Electrical Diagram	Positions	Contacts	Key release in Pos
1	31156	31427	720	620	w/o	w/o	w/	GSS - A	P - 0 - I - II - III	30-58-15/54-19-17-50	0
2	31157	31428	713	603	w/o	w/o	w/	GSS - A	P - 0 - I - II - III	30-58-15/54-19-17-50	0
3	31158	31456	715	201 - 250	w/	w/o	w/o	GSS - A	P - 0 - I - II - III	30-58-15/54-19-17-50	0
4	31159	31457	716	606	w/	w/o	w/o	GSS - A	P - 0 - I - II - III	30-58-15/54-19-17-50	0
5	31648	31649	716	606	w/	w/	w/o	GSS - A	P - 0 - I - II - III	30-58-15/54-19-17-50	0
6	31160	31458	717	607	w/	w/o	w/o	GSS - A	P - 0 - I - II - III	30-58-15/54-19-17-50	0
7	31161	31459	713	603	w/o	w/	w/	GSS - A	P - 0 - I - II - III	30-58-15/54-19-17-50	0
8	31162	31460	717	607	w/	w/	w/o	GSS - A	P - 0 - I - II - III	30-58-15/54-19-17-50	0
9	31163	31461	699	-	w/o	w/o	w/	GSS - B	P - 0 - I - II - III	30-58-15/54-19-17-50	P + 0
10	31164	31462	711	201 - 250	w/o	w/o	w/	GSS - B	P - 0 - I - II - III	30-58-15/54-19-17-50	P + 0
11	31165	31463	713	603	w/o	w/o	w/	GSS - B	P - 0 - I - II - III	30-58-15/54-19-17-50	P + 0
12	31166	31464	719	609	w/o	w/o	w/	GSS - B	P - 0 - I - II - III	30-58-15/54-19-17-50	P + 0
13	31167	31465	712	602	w/o	w/o	w/	GSS - B	P - 0 - I - II - III	30-58-15/54-19-17-50	P + 0
14	31169	31467	716	606	w/	w/o	w/o	GSS - B	P - 0 - I - II - III	30-58-15/54-19-17-50	P + 0
15	31170	31468	717	607	w/	w/o	w/o	GSS - B	P - 0 - I - II - III	30-58-15/54-19-17-50	P + 0
16	31426	31565	713	-	w/o	w/o	w/	GSS - B	P - 0 - I - II - III	30-58-15/54-19-17-50	P + 0
17	31171	31469	712	602	w/o	w/	w/	GSS - B	P - 0 - I - II - III	30-58-15/54-19-17-50	P + 0
18	31172	31470	713	603	w/o	w/	w/	GSS - B	P - 0 - I - II - III	30-58-15/54-19-17-50	P + 0
19	31566	31567	713	603	w/o	w/	w/	GSS - B	P - 0 - I - II - III	30-58-15/54-19-17-50	P + 0
20	31173	31471	717	607	w/	w/	w/o	GSS - B	P - 0 - I - II - III	30-58-15/54-19-17-50	P + 0
21	31174	31472	717	607	w/	w/	w/	GSS - B	P - 0 - I - II - III	30-58-15/54-19-17-50	P + 0
22	31175	31473	711	201 - 250	w/o	w/o	w/	GSS - C	0 - I - II - III	30-15/54-19-17-50a	0
23	31176	31474	713	603	w/o	w/o	w/	GSS - C	0 - I - II - III	30-15/54-19-17-50a	0
24	31177	31475	715	201 - 250	w/	w/o	w/o	GSS - C	0 - I - II - III	30-15/54-19-17-50a	0
25	31178	31476	717	607	w/	w/	w/o	GSS - C	0 - I - II - III	30-15/54-19-17-50a	0
26	31179	31477	711	201 - 250	w/o	w/	w/	GSS - C	0 - I - II - III	30-15/54-19-17-50a	0
27	31180	31498	713	603	w/o	w/	w/	GSS - C	0 - I - II - III	30-15/54-19-17-50a	0
28	31181	31499	726	-	w/o	w/	w/	GSS - C	0 - I - II - III	30-15/54-19-17-50a	0
29	31182	31500	717	607	w/	w/	w/o	GSS - C	0 - I - II - III	30-15/54-19-17-50a	0
30	31183	31506	711	201 - 250	w/o	w/o	w/	GSS - D	0 - I - II - III	30-58-15/54-19-17-50a	0
31	31184	31507	713	603	w/o	w/o	w/	GSS - D	0 - I - II - III	30-58-15/54-19-17-50a	0
32	31185	31508	717	607	w/	w/o	w/o	GSS - D	0 - I - II - III	30-58-15/54-19-17-50a	0
33	31186	31509	713	603	w/o	w/	w/	GSS - D	0 - I - II - III	30-58-15/54-19-17-50a	0
34	31187	31510	713	603	w/o	w/o	w/	GSS - E	P - 0 - I - II - III	30-58-15/54-19-17-50a	P
35	32071	32073	715	I-220	w/	w/	w/	GSS - F	0 - I - II - III - IIII	30 - R - 15 - DR - 19 - 50	0
36	31821	32072	Keyless	Lever	w/	w/	w/o	GSS - B	P - 0 - I - II - III	30-58-15/54-19-17-50a	N/A

Ask for other types

ACCESSORIES



Simple Locking w/ Dust Protection
Art. Nr. 606, 607, 608, 640



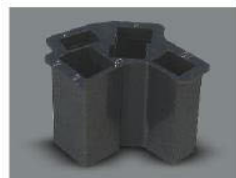
Simple Locking w/o Dust Protection
Art. Nr. 609, 610



Simple Locking w/o Dust Protection
Art. Nr. 602, 603, 604,



Lever
Art. Nr. 22133



6-Pole Connector for AMP 6,3 x 0,8
Art. Nr. 31617



4-Pole Connector for AMP 9,5 x 1,2
Art. Nr. 31616



Plastic Dust Cover
Art. Nr. 20500



Nut M26 x 1,5 brass
Art. Nr. 10230



Stainless Steel Cover
Art. Nr. 31447



Plastic disc
Art. Nr. 20704



Rubber Cap
Art. Nr. 12152