

NEWAGE

Driveline Solutions

90RF AXLE

TYPE

- Double reduction rigid drive axle, designed to take drive from an electric motor, with hydrostatic input as an option. Power is transmitted to the wheels via a set of double reduction gears and a four pinion differential.

OVERALL AXLE RATIO

- 18.36:1 Other ratios can be developed to specific application.

MAXIMUM INPUT SPEED

- 4250 rev/min

MAXIMUM LOAD RATING

- 800 kg (1764 lb)

TORQUE

- Maximum output torque at both wheels with the motor stalled is 1000 Nm (737 lbf.ft).

BRAKES

- Hydraulically operated drum brakes, with 19 mm diameter wheel cylinder acting on one leading and one trailing shoe. The parking brake is cable operated. Service brake performance: 540 Nm (398 lbf.ft) per wheel at 120 bar (1800 psi) line pressure.

WHEEL FIXINGS

- 5 studs: M14 x 1.5 mm pitch on 145 mm PCD.

MOUNTING

- 500 mm suspension mounting centres as standard. Other mounting options can be developed to specific application.

APPROXIMATE WEIGHT

- 130 kg (286 lb)

LUBRICATION

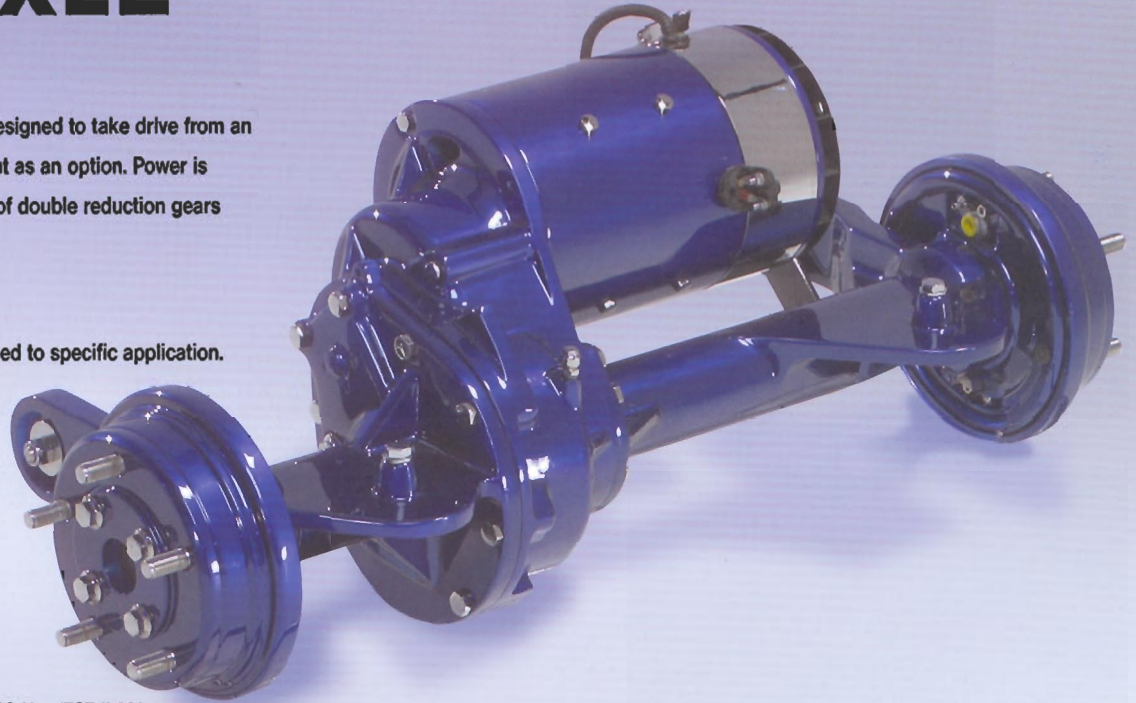
- The unit employs splash lubrication of oil within the axle casing.
Oil specification: Mobil HD80 gear oil or equivalent, for operation in ambient temperatures between:
0 °C and 30 °C.

APPROXIMATE OIL CAPACITY

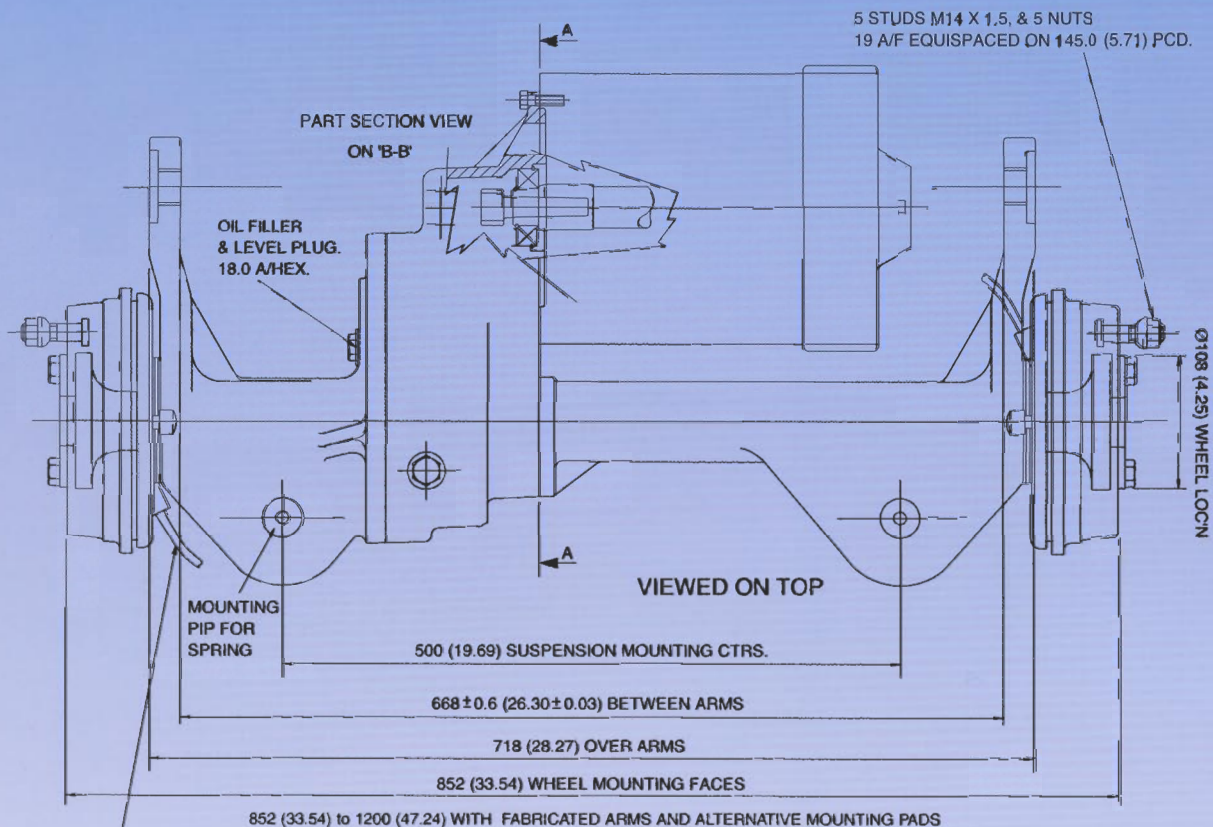
- 0.8 litres (1.4 pints)

AMBIENT OPERATING TEMPERATURE

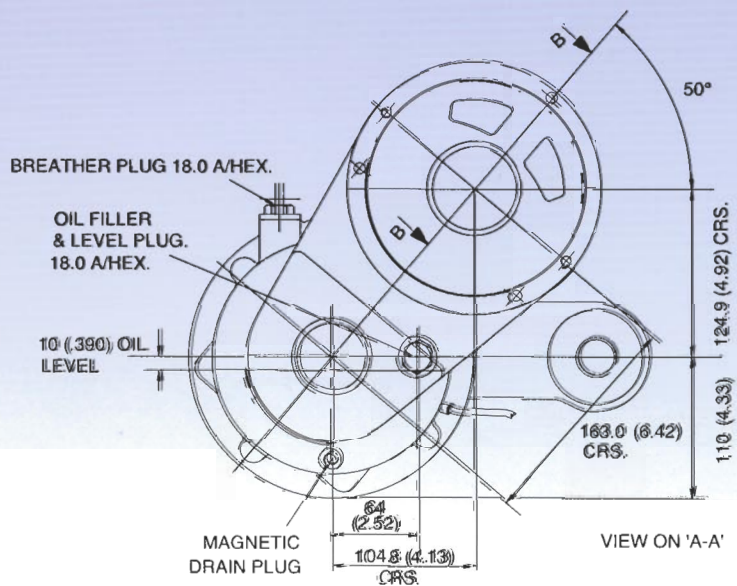
- Between -30 °C and +40 °C



BASIC INSTALLATION DATA - 90RF



HANDBRAKE CABLE
END WITH 1152 (45.35)
LONG OUTER



Note:
In line with our policy of continuous product development and improvement, specifications of Newage driveline equipment may be subject to change without notice.



EXCLUSIVE AUTHORIZED DISTRIBUTOR

MARINDUSTRIEL
8550, DELMEADE
MONTREAL, (QC) H4T 1L7
TELÉ. : 514.342.2748
800.363.2259
FAX : 514.342.6151
info-quebec@marind.ca

MARINDUSTRIAL INC.
80, HARRISVILLE BLVD, UNIT « A »
MONCTON, (NB) E1H 3N4
PHONE : 506.852.3332
800.463.3332
FAX : 506.857.8484
info-atlantic@marind.ca

MARINDUSTRIAL ONTARIO INC.
2320, BRISTOL CIRCLE, UNIT # 8
OAKVILLE, (ON) L6H 5S3
PHONE : 905.829.3004
800.866.3831
FAX : 905.829.4046
info-ontario@marind.ca