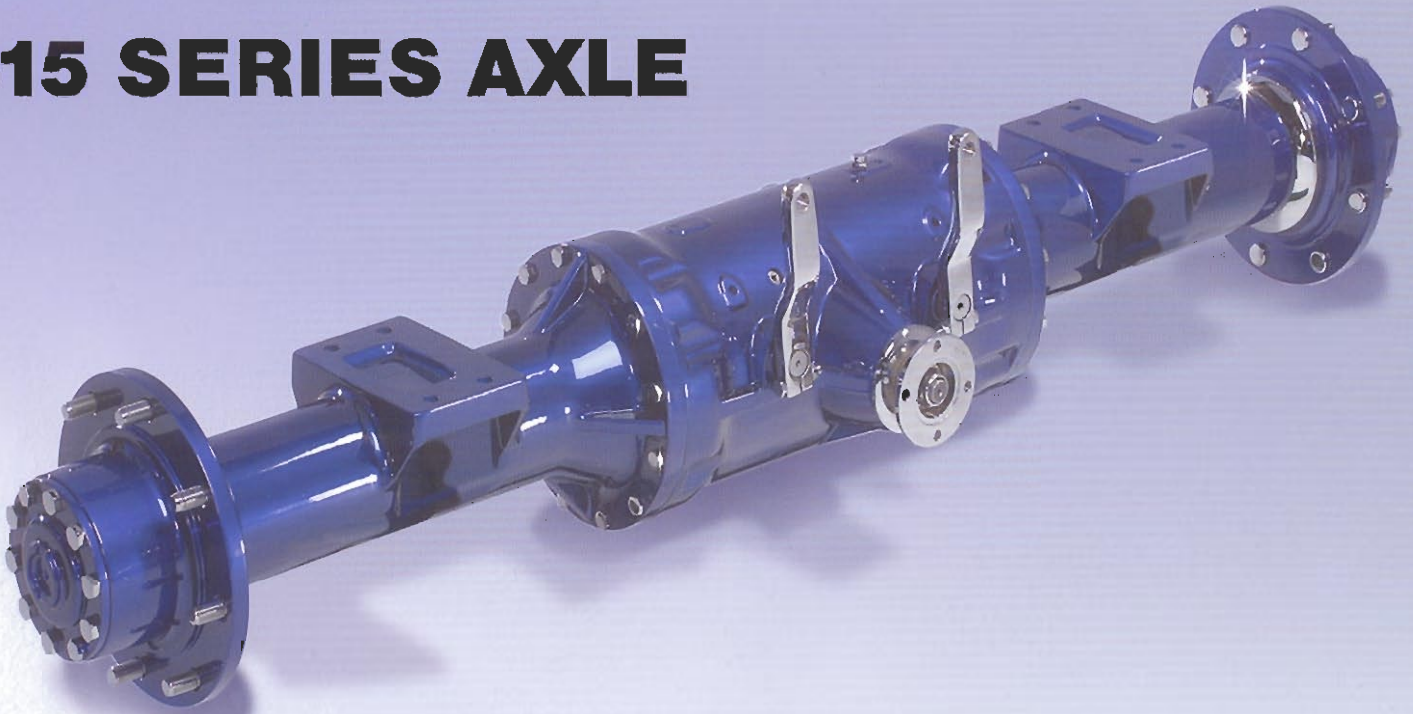


NEWAGE

Driveline Solutions

615 SERIES AXLE



OVERALL AXLE RATIO

- 12.3:1, 14.8:1, 15.8:1

MAXIMUM LOAD RATING

- 7400 kg (16314 lb) based on 1840 mm wheel track and axle mountings at 1120 mm centres.

TORQUE

- Nominal output torque at both wheels is 21778 Nm (16060 lbf.ft).

BRAKES

- The standard brake has two discs, providing maximum braking torque at both wheels of: 15220 Nm (11200 lbf.ft), with 4.67:1 planetary reduction unit. 18250 Nm (13430 lbf.ft), with 5.60:1 planetary reduction unit. Hydraulic operating pressure: 60 bar (900 psi).

PARKBRAKE (OPTIONAL)

- Maximum braking torque at both wheels: 16500 Nm (12168 lbf.ft).
Cable pull at axle: 2670 N (600 lbf), operating at 180 mm centres.

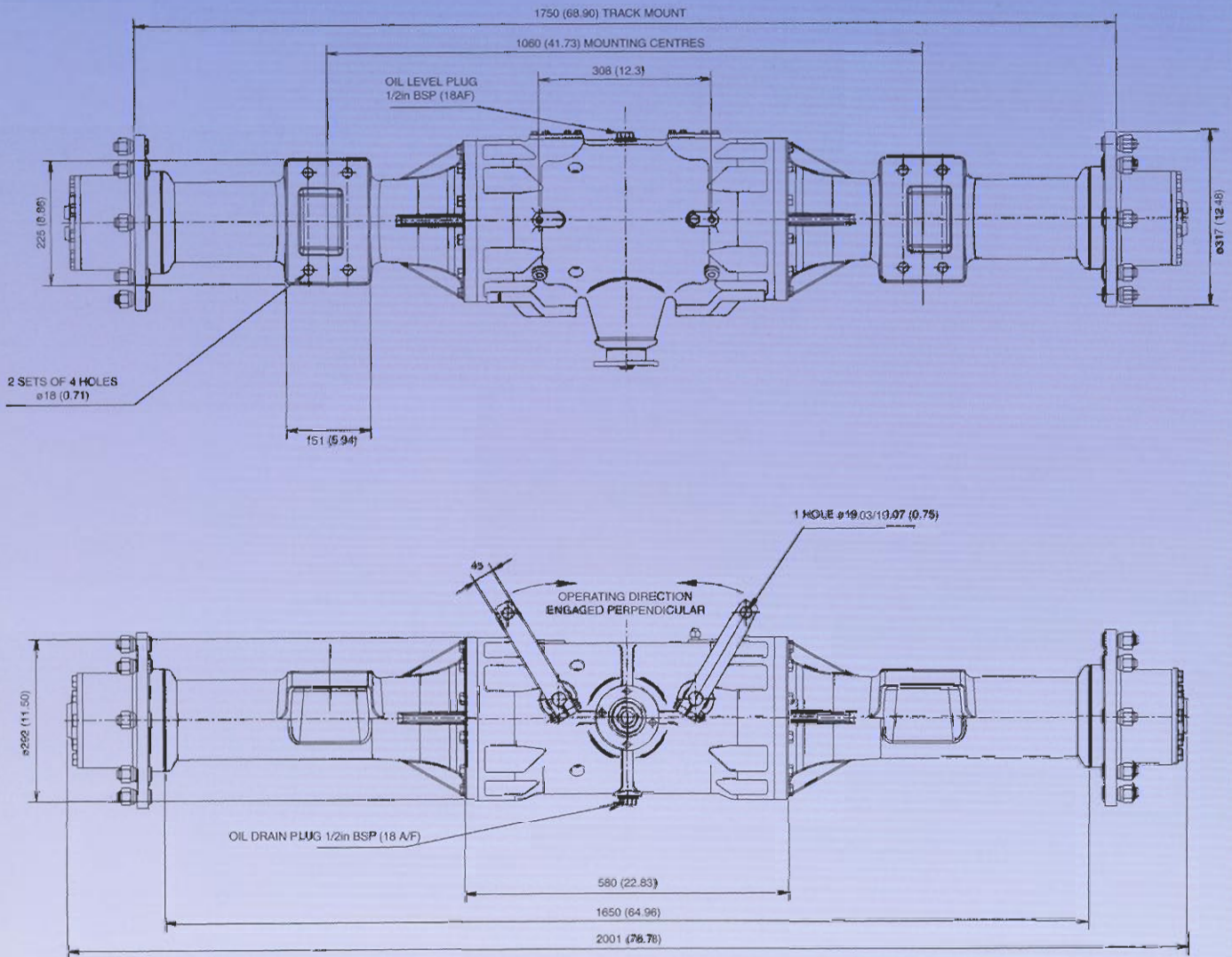
APPROXIMATE WEIGHT

- 305 kg (672 lb)

APPROXIMATE OIL CAPACITY

- 11.4 litres (20.1 pints)





WHEEL FIXING OPTIONS

- 8 studs: M18 thread x 2 mm pitch on 275 mm PCD, with 220 mm wheel spigot diameter.
- 8 studs: 7/8" BSF on 275 mm PCD, with 220 mm wheel spigot diameter.

MOUNTING OPTIONS

- 4 off 18 mm diameter holes: 176 mm by 70 mm hole centres, on rigid mounting pads, with 1060 mm mounting centres.
- 2 off 27 mm diameter holes: 266 mm hole centres on rigid mounting pads, with 1250 mm mounting centres.



Certificate No. Q10728.

Note:

In line with our policy of continuous product development and improvement, specifications of Newage driveline equipment may be subject to change without notice.



EXCLUSIVE AUTHORIZED DISTRIBUTOR

MARINDUSTRIEL
8550, DELMEADE
MONTRÉAL, (QC) H4T 1L7
TÉLÉ. : 514.342.2748
800.363.2259
FAX : 514.342.6151
info-quebec@marind.ca

MARINDUSTRIAL INC.
80, HARRISVILLE BLVD. UNIT « A »
MONCTON, (NB) E1H 3N4
PHONE : 506.852.3332
800.463.3332
FAX : 506.857.8484
info-atlantic@marind.ca

MARINDUSTRIAL ONTARIO INC.
2320, BRISTOL CIRCLE, UNIT # 8
OAKVILLE, (ON) L6H 5S3
PHONE : 905.829.3004
800.866.3831
FAX : 905.829.4046
info-ontario@marind.ca